

# Celebrity Faces of Pancreatic Cancer



*A Tribute...*

*to those who continue to beat the odds*



# Darrel Akersfeld - 2011

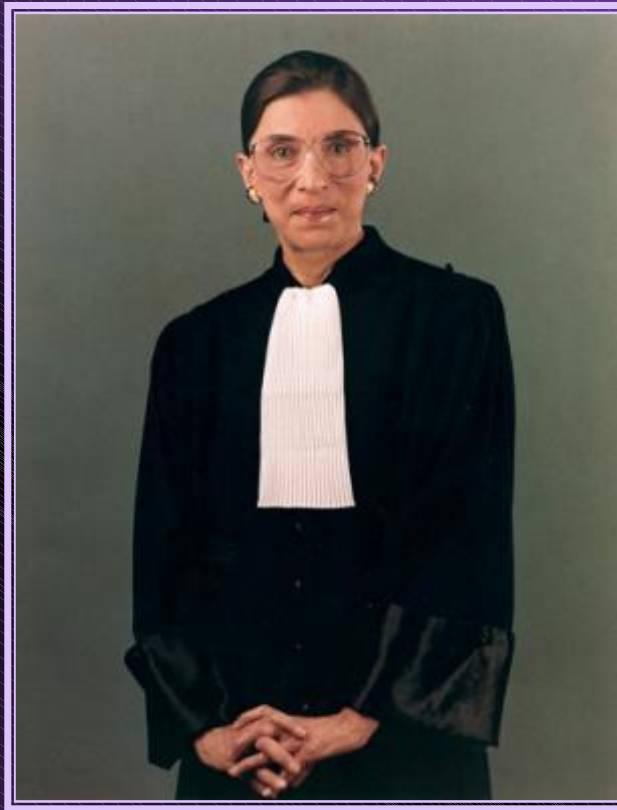
Current Bullpen Coach of San Diego Padres. Pitched with the Athletics, Indians, Rangers and Orioles in the late 80's



# Libby Znaimer -2009

PANCREATIC CANCER CANADA spokesperson.

Prominent Canadian journalist/author. Worked in television broadcasting for two decades and recently joined MZ Media as Vice-President of News and Information for both Classical 96.3FM and AM740. Hosts the Zoomer Report



# Ruth Bader Ginsburg – 2009

Associate Justice on the U.S. Supreme Court. Appointed by President Bill Clinton in 1993. Diagnosed with early stages of pancreatic cancer after a routine check up for colon cancer. Operated in February 2009



## Charlotte Rae -2009

Actress – Television and Broadway. Best know for her roles in Different Strokes and Facts of Life.

In 2009, due to the frequency of pancreatic cancer in her own family, Rae was screened and diagnosed early. Her mother, an uncle, and her elder sister all reportedly died of the disease. Rae is cancer free and in remission as of 2012.



# Candye Kane -2008

Blues/Jazz Singer

Was diagnosed with neuroendocrine pancreatic cancer and the tumor was successfully resected on April 18, 2008.



# Marilyn Horne – 2005

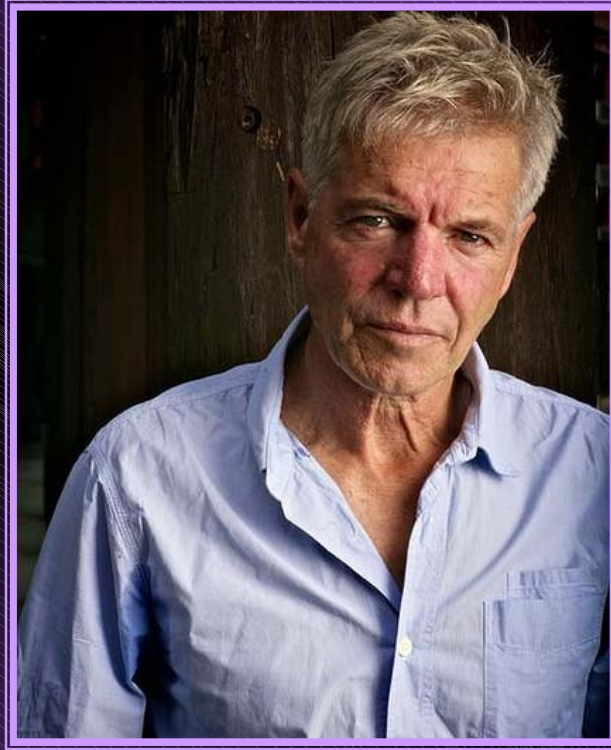
American opera singer who was diagnosed  
in December 2005 (in remission)



# Debbie Ryan – 2000

Head Women's coach of University of Virginia and  
inducted into Women's Basketball Hall of Fame





# Colin Friels – 1997

Scottish born Australian Actor married to Judy Davis.



"I dream that the word 'cure' will no longer be followed by the words 'it's impossible'."

Patrick Swayze – 2008, Stand Up 2 Cancer